



# 常规系列 (General purpose) DJW12-20(12V20Ah)

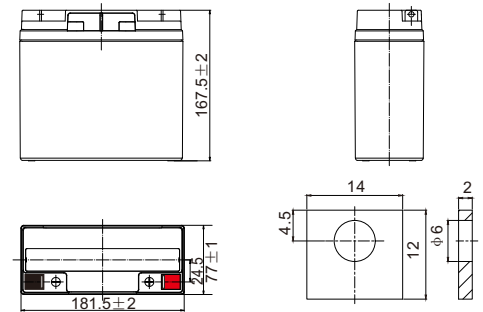


## 规格 Specifications

额定电压 Rated Voltage	12V	
标称容量 Nominal Capacity(C <sub>20</sub> , 1.80V/cell)	20Ah	
尺寸 Dimension	长 Length	181.5±2mm (7.14 in.)
	宽 Width	77±1mm (3.03 in.)
	高 Container Height	167.5±2mm (6.59 in.)
	总高(含端子) Total Height	167.5±2mm (6.59 in.)
重量 Approx Weight	6.0 Kg (13.2 lbs)	
端子 Terminal	T3	
外壳材料 Container Material	ABS	
额定容量 Rated Capacity (25°C)	20.00 Ah	C20(1.00A, 1.80V/cell)
	18.60 Ah	C10(1.86A, 1.80V/cell)
	17.20 Ah	C5(3.44A, 1.75V/cell)
	15.78Ah	C3(5.26A, 1.75V/cell)
5S最大放电电流 Max. Discharge Current	300A (5s)	
	内阻 Internal Resistance (25°C)	Approx 15.0mΩ
运行温度 Operating Temp.Range	放电 Discharge	-20 ~ 55°C (-4 ~ 131°F)
	充电 Charge	0 ~ 40°C (32 ~ 104°F)
	存储 Storage	-15 ~ 50°C (5 ~ 122°F)
推荐温度 Nominal Operating Temp. Range	25±5°C (77±5°F)	
最大充电电流(25°C)Max.Charging Current	6.0A	
充电电压(25°C) Charge voltage	Float	13.5~13.8V
	温度补偿 Temp. Coefficient	-3mV/单格/°C
	循环(均充) Cycle(Equalization)	14.1~14.4V
温度对容量影响 Effect of temp. to Capacity	40°C (104°F)	106%
	25°C (77°F)	100%
	0°C (32°F)	86%
自放电 Self Discharge	≤3%/月 @ 25°C	



## 外形 Layout



## 恒流放电表(A) 25 °C Constant Current Discharge

F.V/Time	5min	10min	15min	20min	30min	45min	1h	1.5h	2h	3h	4h	5h	6h	8h	10h	20h
1.85V/cell	50.2	34.6	27.4	22.4	16.9	12.5	10.6	7.90	6.33	4.74	3.75	3.12	2.69	2.13	1.74	0.948
1.80V/cell	58.5	40.9	31.9	25.8	19.1	14.0	11.7	8.65	6.88	5.12	4.04	3.36	2.88	2.28	1.86	1.00
1.75V/cell	63.9	43.8	33.7	27.1	19.9	14.5	12.1	8.94	7.09	5.26	4.14	3.44	2.94	2.32	1.89	1.01
1.70V/cell	69.2	46.7	35.6	28.5	20.8	15.1	12.6	9.24	7.32	5.41	4.24	3.52	3.00	2.36	1.92	1.03
1.67V/cell	72.2	48.4	36.8	29.3	21.3	15.4	12.8	9.41	7.44	5.50	4.30	3.56	3.04	2.39	1.94	1.03
1.60V/cell	79.6	52.4	39.4	31.2	22.5	16.2	13.5	9.83	7.75	5.70	4.45	3.67	3.12	2.44	1.98	1.05

## 恒功率放电表(W) 25 °C Constant Power Discharge

F.V/Time	5min	10min	15min	20min	30min	45min	1h	1.5h	2h	3h	4h	5h	6h	8h	10h	20h
1.85V/cell	95.6	66.4	52.7	43.1	32.6	24.2	20.5	15.4	12.4	9.28	7.36	6.15	5.29	4.21	3.45	1.88
1.80V/cell	110.1	77.4	60.7	49.3	36.5	26.9	22.6	16.8	13.4	10.0	7.91	6.60	5.66	4.50	3.68	1.99
1.75V/cell	118.6	82.0	63.5	51.2	37.8	27.8	23.3	17.2	13.7	10.2	8.08	6.73	5.77	4.57	3.73	2.01
1.70V/cell	126.7	86.5	66.4	53.3	39.1	28.6	23.9	17.7	14.1	10.5	8.25	6.86	5.88	4.64	3.78	2.03
1.67V/cell	131.2	89.0	68.6	54.5	39.9	29.1	24.3	17.9	14.3	10.6	8.35	6.93	5.94	4.68	3.81	2.05
1.60V/cell	142.9	95.3	71.8	57.2	41.7	30.3	25.3	18.6	14.8	10.9	8.58	7.12	6.08	4.78	3.88	2.08



# 常规系列 (General purpose) DJW12-20(12V20Ah)



## 应用 Applications

- 通讯  
Telecommunications
- UPS、数据中心  
UPS、Data Center
- 储能、电力  
Energy Storage、Electric Systems
- 紧急照明、安防  
Emergency Lighting、Security
- 医疗、电子设备  
Medical、Electronic Equipment
- 动力  
Motive Power

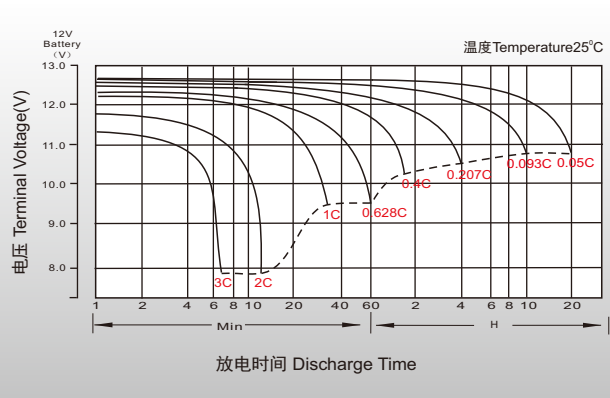
## 特征 General Features

- 25°C下，设计浮充寿命可达5年。  
Under 25°C, the designed floating life is up to 5 years.
- 特殊的排气结构和密封技术, 使用安全可靠, 安装灵活, 维护便捷。  
Special exhaust structure and sealing technology, safe and reliable, flexible installation, convenient maintenance.

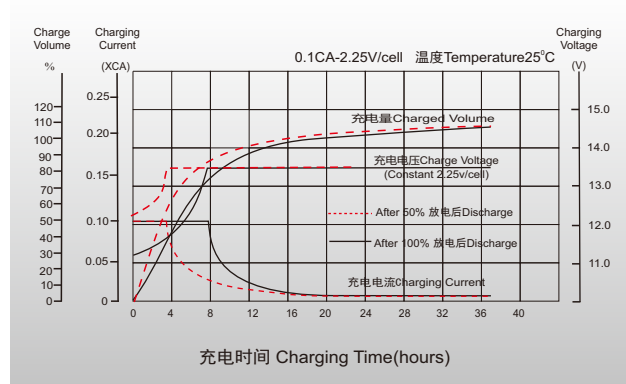
## 标准 Standards

- 符合IEC 61056, GB/T19639  
Compliance with IEC 61056, GB/T19639
- UL 认证  
UL Certified
- 企业通过了IATF16949, OHSAS 18001, ISO 9001和ISO 14001体系认证  
Manufactured in Leoch@IATF16949, OHSAS 18001, ISO 9001 and ISO 14001 certified production facilities

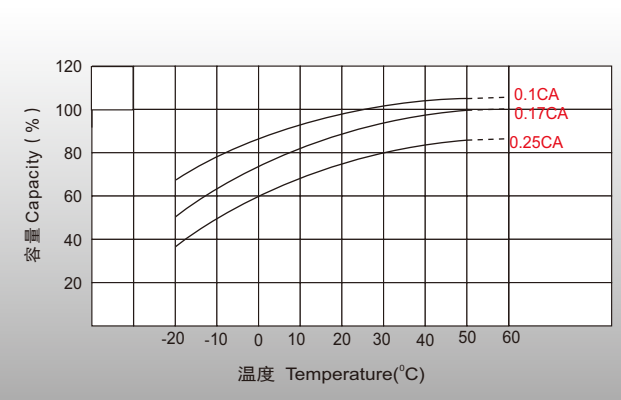
## 放电特性曲线 Discharge Characteristics



## 浮充特性曲线 Float Charging Characteristics



## 温度对容量影响 Temperature Effects in Relation to Battery Capacity



## 温度对浮充寿命影响 Temperature Effects on Long Term Float Life

